

Round Trip Hiking Time
1.5 Hours

Round Trip Distance
2.25 Miles

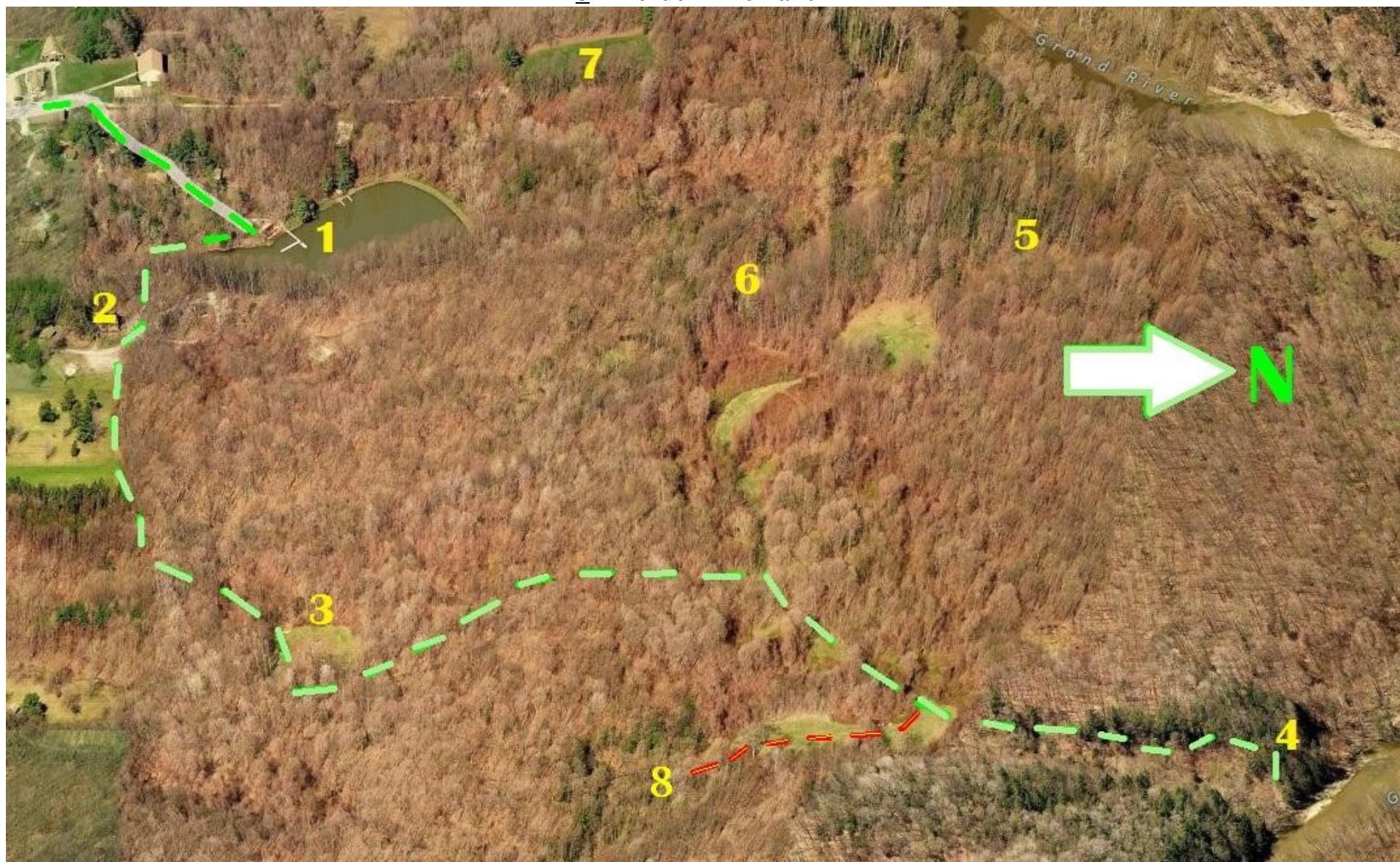
Elevation Change
150 Feet

Map Points

- 1—Milner Lake
- 2—A-Frame
- 3—Paint Ball Field
- 4—Pioneer Point
- 5—Sledding Hill
- 6—Cathedral Falls
- 7—Ball Field
- 8—Border Line Falls

Latitude/Longitude

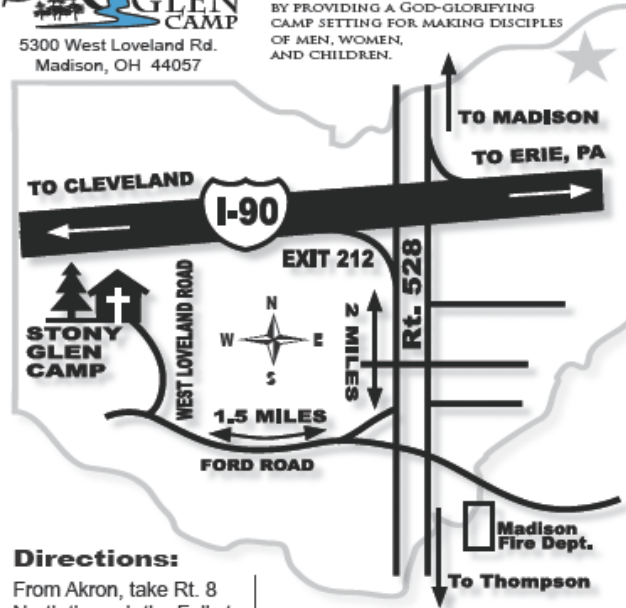
Pioneer Point : N41 44.485 W81 04.211
Borderline Falls: N41 44.283 W81 04.197
Paint Ball Field : N41 44.118 W81 04.238





5300 West Loveland Rd.
Madison, OH 44057

STONY GLEN CAMP SUPPORTS LOCAL CHURCHES IN FULFILLING THE GREAT COMMISSION (MATTHEW 28:19-20) BY PROVIDING A GOD-GLORIFYING CAMP SETTING FOR MAKING DISCIPLES OF MEN, WOMEN, AND CHILDREN.



Directions:

From Akron, take Rt. 8 North through the Falls to I 271, East to I 90. I-90 East to exit 212 (Rt.528). Turn South toward Thompson 2 miles. Turn right on Ford Rd. Go 1.5 miles to West Loveland Rd.

Call us
(440) 298-3264
or check our web site for camp and rental information.
email: info@stonyglencamp.org
website: www.stonyglencamp.org



Pioneer Point & Borderline Falls



5300 West Loveland Rd.
Madison, OH 44057